

Liebherr Customer Service

Upgrade: Negative Angle Indication for Luffing Jibs

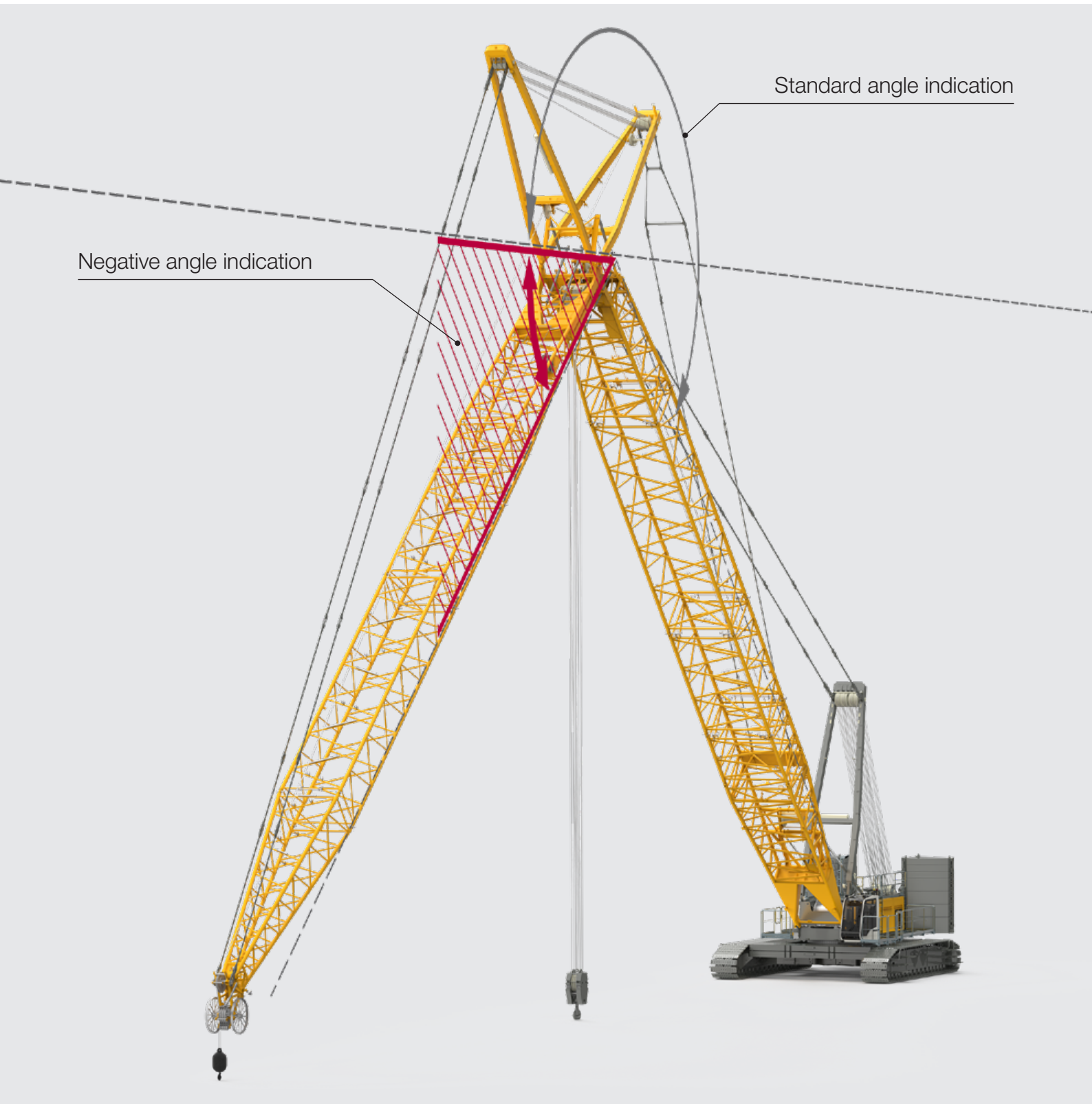
Upgrade for:

LR 1100
LR 1130
LR 1160
LR 1200
LR 1250
LR 1280
LR 1300 SX



LIEBHERR

Angle Range (0° to -90°)



Negative Angle Indication for Advanced Safety

The assembly and disassembly of crawler cranes with luffing jib, or parking in a defined jackknife position can be very demanding tasks, not only for the crane operator, but also for those assisting through manual measurements outside the cabin. With the upgrade package “Negative Angle Indication for Luffing Jibs” the task is made considerably easier.

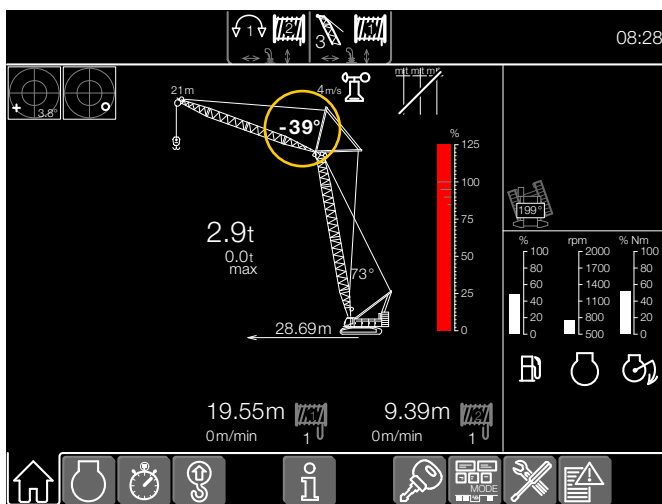
Thanks to the real time display of the negative angle on the cabin monitor, the operator is permanently informed of the actual jib position throughout the whole process. Furthermore, a visual warning is provided as soon as the luffing jib approaches the tipping angle of the rigid tilting-back supports.

Features

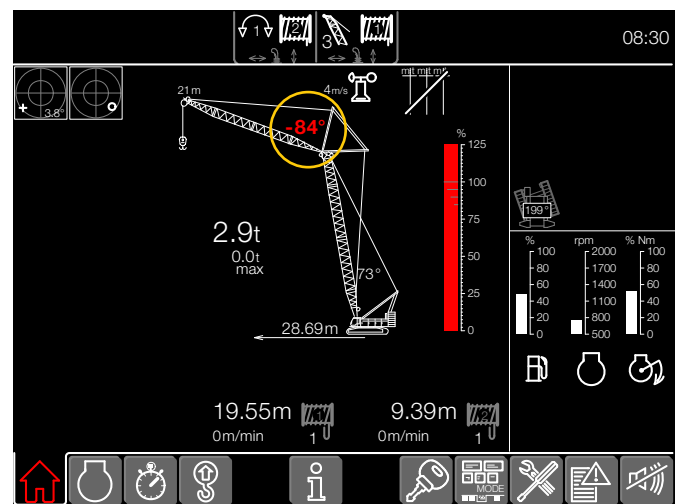
- Negative angle indication through constant monitoring in real time
- Visual warning when approaching tipping angle of the luffing jib’s rigid tilting-back supports
- Predefined jackknife position easily achieved

Your benefits

- No assistance required from a guide on the ground to measure the negative jib angle
- Increased safety as the crane operator is constantly informed of the jib position
- User-friendly and comfortable handling for the crane operator



The crane operator sees the jib's negative angle on the monitor in real time.



The crane operator receives a visual warning before reaching the tipping angle of the luffing jib's rigid tilting-back supports.

The Liebherr Group of Companies



Wide Product Range

The Liebherr Group is one of the largest construction equipment manufacturers in the world. Liebherr's high-value products and services enjoy a high reputation in many other fields. The wide range includes domestic appliances, aerospace and transportation systems, machine tools and maritime cranes.

Exceptional Customer Benefit

Every product line provides a complete range of models in many different versions. With both their technical excellence and acknowledged quality, Liebherr products offer a maximum of customer benefits in practical application.

State-of-the-art Technology

To provide consistent, top quality products, Liebherr attaches great importance to each product area, its components and core technologies. Important modules and components are developed and manufactured in-house, for instance the entire drive and control technology for construction equipment.

Worldwide and Independent

Hans Liebherr founded the Liebherr family company in 1949. Since that time, the enterprise has steadily grown to a group of more than 130 companies with over 41,000 employees located on all continents. The corporate headquarters of the Group is Liebherr-International AG in Bulle, Switzerland. The Liebherr family is the sole owner of the company.

www.liebherr.com

Find a Servicepartner near you:

